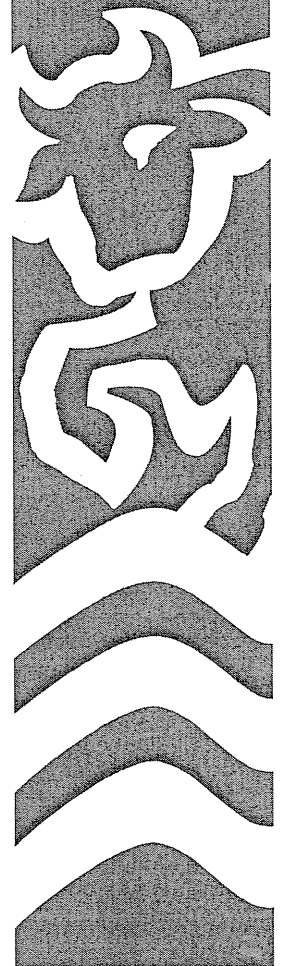


www.oxford.gov.uk



Oxford City Council

Local Development Scheme
2005 - 2008



OXFORD CITY COUNCIL LOCAL DEVELOPMENT SCHEME 2005 - 2008

Foreword

This is Oxford City Council's first Local Development Scheme (LDS) which explains how, and when, Oxford City Council will be producing its Local Development Framework (LDF). Under the Planning & Compulsory Purchase Act 2004, LDFs will replace the current development plans and will contain the detailed policies and proposals to guide development in Oxford. This LDS is critical to the successful project management of Oxford's LDF, and sets out the work programme and resources required to prepare the first phase of policies and proposals. It also clearly identifies which policies of the current development plan will be 'saved' until they are replaced with new ones.

The timetable for the production of the various documents that will make up the LDF is very challenging. It is envisaged that the Statement of Community Involvement (SCI) will be adopted in September 2006; and the first suite of policy documents (including the Core Strategy and Area Action Plan) will be adopted in September 2007.

The documents that comprise the LDF will contain policies and proposals to guide development within Oxford and will eventually replace those contained in the emerging Oxford Local Plan 2001-2016, due to be adopted in Autumn / Winter 2005.

The first phase of the LDF will cover the preparation of the following documents:

1. Adoption of the Oxford Local Plan 2001 – 2016 (OLP)
2. Statement of Community Involvement (SCI)
3. Development Plan Documents (DPD)
 - Core Strategy
 - Oxford's West End Area Action Plan
 - Site Allocations
 - Transport and Accessibility
4. Supplementary Planning Documents (SPD)
 - Affordable and Key Worker Housing
 - Planning Obligations/Planning Gain Supplement
 - Parking Standards, Transport Assessments & Travel Plans
5. Annual Monitoring Report

The Planning Policy team,
Oxford City Council,
Ramsay House,
10 St. Ebbes Street,
OXFORD. OX1 1PT

Web: www.oxford.gov.uk/planning/ldf
Tel: 01865 252847
Email: planningpolicy@oxford.gov.uk

Contents

Section

	Foreword	
1.	Introduction	1
2.	Resources and Management Arrangements	4
3.	Schedule of Local Development Documents	5
4.	Relationship with existing Planning Policy Documents	7
5.	Background Evidence	8
6.	Interim Update Process	10
7.	Annual Monitoring Report	11
8.	Risk Analysis	13
	Glossary	16

Figures

Figure 1:	Contrasts between new and previous planning systems	3
Figure 2:	Relationships between Oxford's LDF documents	6

Appendices

Appendix 1:	Schedule of Local Development Documents	19
Appendix 2:	Profiles of each Local Development Document	26
Appendix 3:	Saved Policies in the Oxford Local Plan 1991 – 2001	48
Appendix 4:	Saved Policies in the Oxford Local Plan 2001 – 2016	54
Appendix 5:	Relationship between adopted Supplementary Planning Guidance and Saved Policies	60
Appendix 6:	List of potential Supplementary Planning Documents	61
Appendix 7:	Gantt Chart of the Local Development Framework	64

1. Introduction

- 1.1 The enactment of the Planning & Compulsory Purchase Act 2004 (P&CP Act) has resulted in a number of new terms and acronyms, which has led to the understanding of the subject to be quite difficult, even for the planning professional. A Glossary is attached to this document that is intended to be a simple explanation of the terms and the abbreviations used.
- 1.2 This document has been prepared under the provisions of the P&CP Act, which was enacted in May 2004 and came into force on 28th September 2004.
- 1.3 The P&CP Act effects a number of changes to the existing development plan system. In particular, the system of structure and local plans is to be replaced by Regional Spatial Strategies (RSS), and at the local level by Development Plan Documents (DPD).
- 1.4 A Local Development Scheme (LDS) is a three year project plan for preparing Local Development Documents (LDD), and provides the starting point for the local community to find out what a Local Authority's current planning policies are for the area. The LDS will be reviewed and submitted to the Secretary of State on an annual basis. The LDS will be published on the City Council's website (www.oxford.gov.uk/ldf).
- 1.5 The three-year programme includes 'consultation milestones' to inform the public about opportunities to get involved with the plan making process and to let them know the likely dates for involvement.
- 1.6 The LDDs will set out the spatial strategy for Oxford, and comprises Development Plan Documents (DPDs) and Supplementary Planning Documents (SPDs). DPDs are documents that form part of the statutory Development Plan. SPDs are non-statutory documents that supplement the policies and proposals in DPDs. DPDs and SPDs are two types of documents that are both called LDDs. Appendix 1 contains a schedule of the LDDs to be produced during the period 2005 – 2008. The 'file', which contains all the LDDs, is called the Local Development Framework (LDF).
- 1.7 DPDs, along with the Regional Spatial Strategy (RSS) will comprise the statutory development plan, which is the basis upon which all planning decisions are made. DPDs will progressively replace the policies contained in the emerging Oxford Local Plan 2001-2016 which is due to be adopted in Autumn 2005, and 'saved' until they are replaced by policies contained in DPDs. The emerging Oxfordshire Structure Plan 2016 will be replaced by policies in both the RSS and the Core Strategy DPD.

- 1.8 This LDS has been submitted to the Secretary of State, via the Government Office for the South East (GOSE), for approval. GOSE has considered our LDS, having regard to:
- whether any of the proposed SPDs ought to be prepared as DPDs because they ought to be subject to independent examination;
 - whether the time scales for the preparation of the proposed LDDs are realistic; and
 - whether our proposed information base is sufficiently comprehensive to underpin our proposed DPDs.
- 1.9 Stakeholder and community engagement is a fundamental requirement of the planning system. The City Council has therefore alerted various consultation bodies to our timetable in advance of submission of the LDS to the Secretary of State, to give them extra time to prepare themselves to respond to future consultations on local development documents within the required timescales. We have also informed the Planning Inspectorate (PINS) to alert them to the timetable of development plan document production although dates still need to be firmed up when each DPD has reached a 'milestone'.
- 1.10 The City Council is committed to the programme set out in this LDS because of the benefits that an up to date and effective development plan and supplementary policies can have, including:
- community commitment to the future of an area;
 - providing a means for co-ordinating the activities of different departments, agencies and organisations;
 - providing a sense of on-the-ground realism and certainty to the objectives and development requirements of Regional Spatial Strategy (RSS);
 - providing a robust evidence base to provide a strong and credible basis for future engagements in the RSS preparation process;
 - the role of plans in promoting regeneration and investment, by creating certainty and commitment to change and improvement;
 - the need for a clear audit trail to link bids for public funds to a coherent and soundly based strategy for an area;
 - providing a strongly justified basis for successful negotiations over development proposals and for developer contributions.
- 1.11 Oxford City Council will review and roll forward the LDS on an annual basis as a result of the findings of the Annual Monitoring Report (AMR).
- 1.12 This LDS specifies:
- the Local Development Documents (LDDs) being prepared over a three year period;
 - which of these documents will have Development Plan status as Development Plan Documents (DPDs);

- which of these documents will provide additional guidance to adopted policies in the form of Supplementary Planning Documents (SPDs);
- the timetable and resources for the production of each of the LDDs;

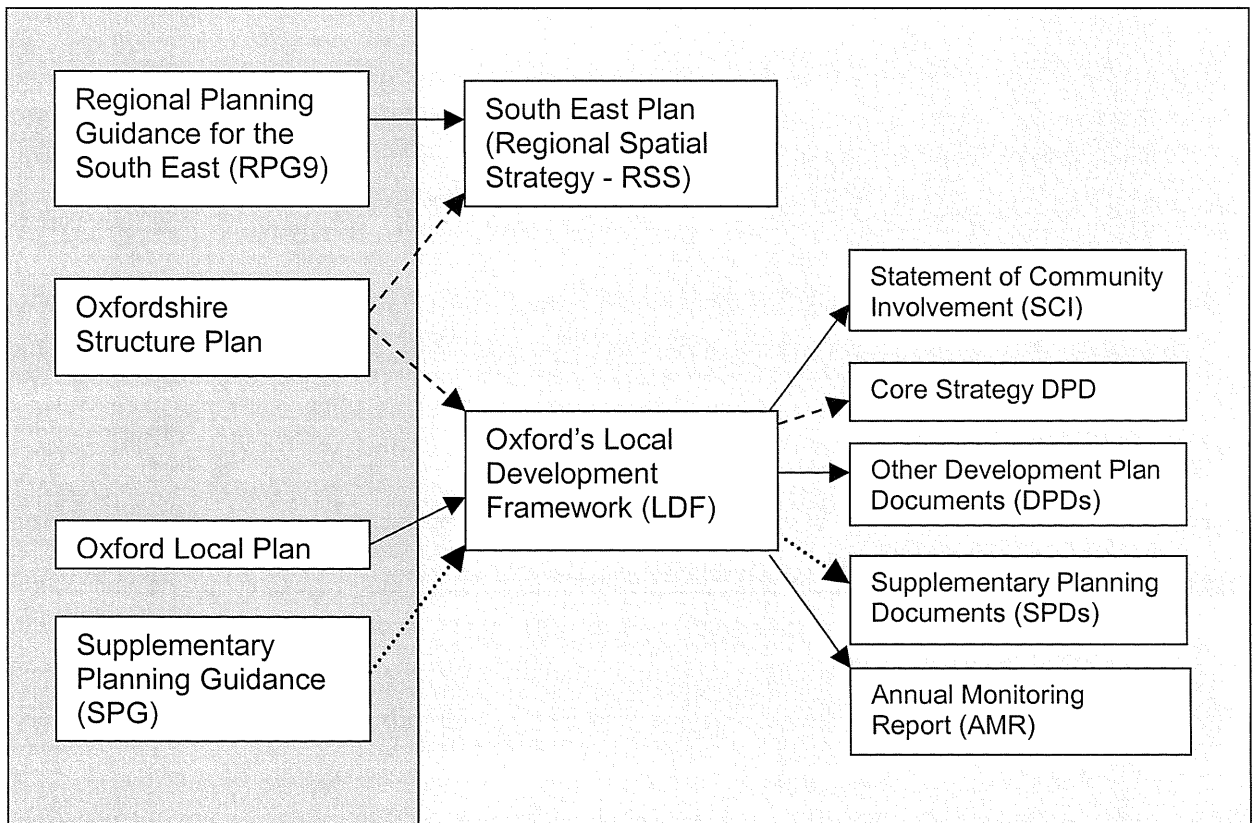
- how the documents interrelate; and
- how the AMR and the subsequent review of the LDS will take place.

1.13 The LDS will therefore:

- provide the City Council's public statement of documents that will be prepared to guide development at the local level;
- enable the City Council to prioritise and plan resources for the preparation of LDDs; and
- provide a timetable for the preparation and review of LDDs.

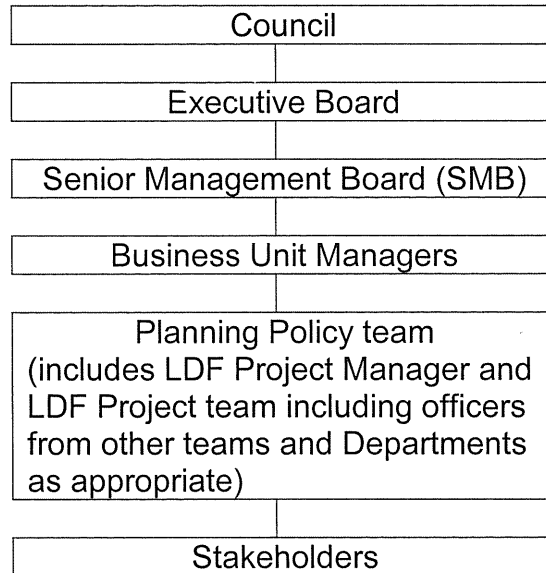
Figure 1: Contrasts between the new and previous planning systems

Previous planning system New planning system



2. Resources and Management Arrangements

- 2.1 The resource and management arrangements for each Local Development Document are set out within each 'LDD Profile' attached at Appendix 2. The broad management arrangements for preparation of the LDDs are set out below. Resources will be primarily from the Planning Policy team of the Planning Business Unit, but will involve other officers and external resources as necessary. In particular this is likely to include officers from the Strategy and Review Business Unit, Neighbourhood Renewal and the Corporate GIS facility.

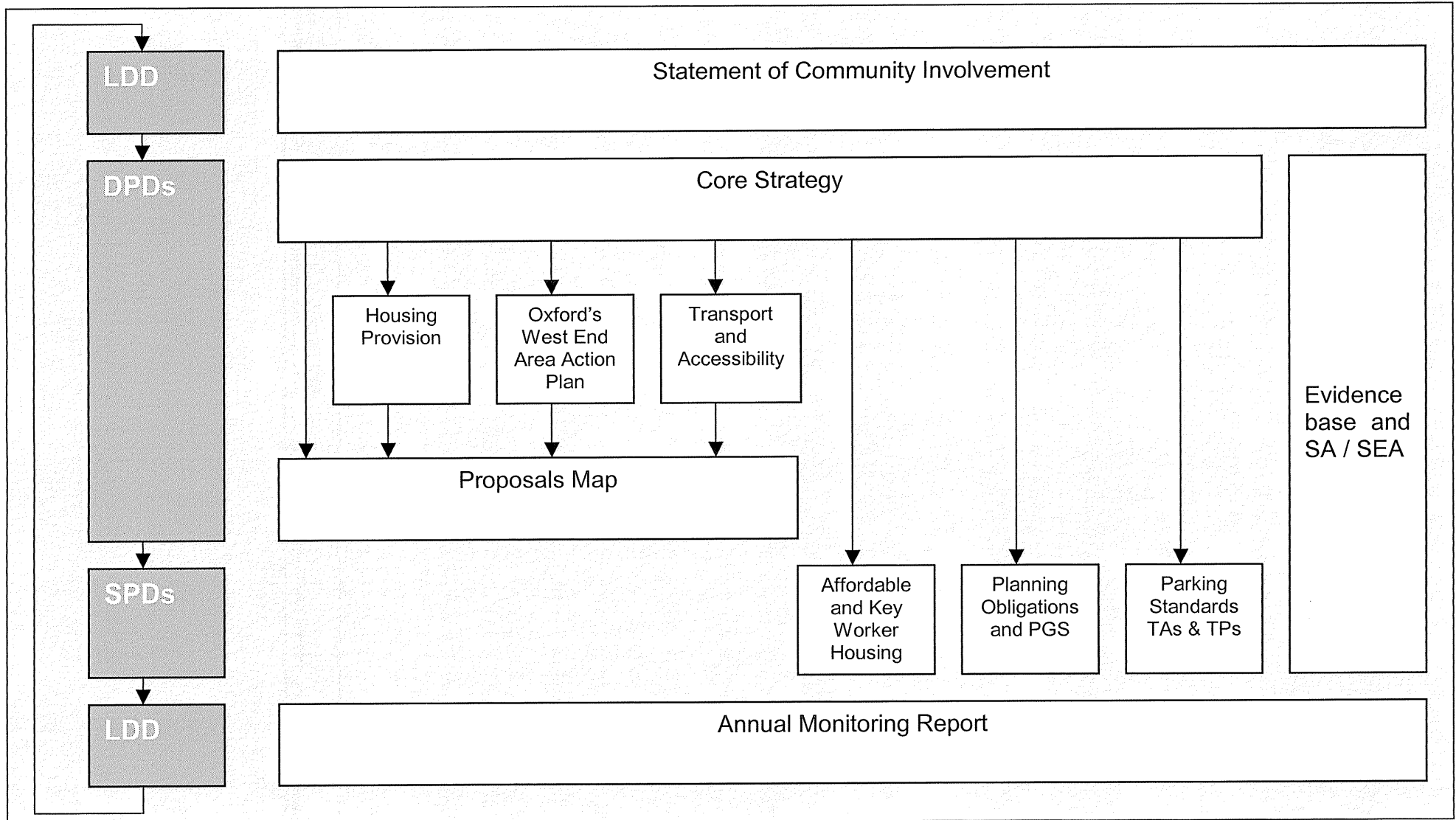


- 2.2 A Members Steering Group, consisting of four members has been established to oversee the LDF process. At officer level, reports will be presented at key stages to the Senior Management Board (SMB) to ensure the co-ordination of all the City Council's interests in the LDF preparation process. In addition a LDF project team has been set up including a core team of officers from the Planning Business Unit. This team will be expanded to include other City Council officers as appropriate.
- 2.3 Consultants may be engaged on specific projects where there is a lack of capacity or expertise 'in house'. A specific budget has been made for 2005/06 to cover work planned for the first year.

3. Schedule of Local Development Documents

- 3.1 The City Council has considered carefully which Local Development Documents it should produce. This has been influenced by policies and proposals in the adopted Oxford Local Plan 1991-2001 (OLP97), the emerging Oxford Local Plan 2001-2016 (OLP), the adopted Oxfordshire Structure Plan 2011 (SP), and the emerging deposit draft Oxfordshire Structure Plan 2016 (DSP), the spatial elements of the Community Strategy, advice from the Government Office for the South East (GOSE), guidance on preparing LDDs, and known priorities within the community.
- 3.2 Initially, the City Council will produce a Statement of Community Involvement (SCI) and the following DPDs:
- Core Strategy
 - Oxford's West End Area Action Plan
- 3.3 Production will then start on the following DPDs:
- Transport and Accessibility
 - Site Allocations
- 3.4 These documents will form part of the statutory Development Plan and will be subject to independent examination. A Proposals Map will also be prepared as a DPD (although it does not follow the same process) and will be updated as each new DPD is adopted.
- 3.5 The City Council will also produce Supplementary Planning Documents (SPDs) covering:
- Affordable and Key Worker Housing
 - Planning Obligations/Planning Gain Supplement
 - Parking Standards, Transport Assessments and Travel Plans
- 3.6 A table detailing the schedule of the Local Development Documents that will be the first to be prepared is contained at Appendix 1. This schedule and the individual project profiles in Appendix 2 summarise each LDD by providing:
- a document reference and title
 - a brief synopsis of its content
 - details of the area to which it relates
 - the status of the document
 - the chain of conformity
 - resources
 - management arrangements
 - key milestones in preparation
 - approach to involving key stakeholders and the community.

Figure 2: Relationships between Oxford's LDF documents



4. Relationship with existing Planning Policy documents

- 4.1 The existing strategic and local planning policy framework comprises:
- Oxford Local Plan 1991-2001, adopted September 1997
 - Oxfordshire Structure Plan 2011, adopted August 1998
 - Second Draft Oxford Local Plan 2001-2016, February 2003
 - Deposit Draft Oxfordshire Structure Plan 2016, September 2003
 - Various publications providing supplementary planning guidance.
- 4.2 Once adopted, the various Development Plan Documents will provide the new planning policy framework for Oxford. Until that time, existing Local Plan policies will be 'saved'. Appendix 3 contains a schedule of policies in the Oxford Local Plan 1991 – 2001 (LP) that will be saved under this procedure.
- 4.3 The transitional arrangements to the new planning system allow for development plans initiated under the old system, but adopted after the commencement of the P&CP Act, to become 'saved' from the date of their adoption. The emerging Oxford Local Plan 2001-2016 (OLP) and the emerging Oxfordshire Structure Plan 2016 (SP) are proposed to be saved as such. The adoption date for both these documents is currently anticipated to be Autumn / Winter 2005.
- 4.4 When the emerging Oxford Local Plan 2001 – 2016 is adopted, the policies contained in that document will be saved and will replace the saved policies of the Oxford Local Plan 1991 – 2001. Appendix 4 contains a schedule of the policies of the Oxford Local Plan 2001 – 2016 that will be saved in this manner.
- 4.5 The schedule in Appendix 4 also identifies the Development Plan Document that will replace each of the saved policies. Some of the 'saved' policies will need to be saved beyond the first three-year work programme, i.e. beyond March 2008, until they are replaced by DPDs programmed in future Local Development Schemes.
- 4.6 The City Council currently has adopted Supplementary Planning Guidance (SPG), which support policies and proposals in the adopted and or emerging Local Plans. Appendix 5 identifies how existing SPGs are linked to 'saved' policies in the adopted Oxford Local Plan 1991-2001 or the emerging Oxford Local Plan 2001-2016. Such SPGs will, under the transitional arrangements, be a material consideration while the policies and proposals remain saved.

5. Background Evidence

- 5.1 LDDs will be prepared using information from a wide range of sources both from within the City Council and from external partners. It is recognised that the list below cannot be exhaustive and therefore each LDD will include an annex outlining the main sources used in its preparation. As set out in the Monitoring and Review section, the Annual Monitoring Report of the LDF will include assessing whether there is any new technical information, which requires review of individual LDDs.
- 5.2 The background technical studies and strategies that will be used in the first stage of preparing the LDDs will include:

Study/Survey	Status	Review
Existing		
Oxfordshire Local Transport Plan 2001-2006 (LTP)	July 2000	Review begun May 2004 for 2006-2011 (LTP2)
Landscape Character Assessment	February 2002	No review proposed
Urban Capacity Study Update as updated by Topic Paper 5	February 2003	
Oxford's Community Strategy	2004	Review proposed for 2005
Oxfordshire Community Strategy	2004	
Oxford Retail Needs Study (RNS)	February 2004	No review proposed
Oxford's Housing Requirements Study (HRS)	April 2004	No review proposed
Oxford's Housing Viability Study (HVS)	April 2004	No review proposed
Oxford's Housing Strategy	2001 – 2004	Draft 2003 – 2006
Oxford Guest House and Small Hotel Sector Study	July 2004	No review proposed
Economic Study of Oxford	October 2004	No review proposed

OXFORD CITY COUNCIL
LOCAL DEVELOPMENT SCHEME

Studies Proposed / In Preparation		
Oxford's West End Area Development Framework	Currently being drawn up by consultants	N/A
Oxfordshire Local Transport Plan 2006-2011 (LPT2)	Review begun May 2004	N/A
Economic Needs Study	Timing TBC	

6. Interim Update Process

- 6.1 The main process of review and update for the LDS will be through the Annual Monitoring Report (AMR) (see Section 7). However, it is possible that there will be occasions when the need for urgent additional guidance arises prior to the Annual Review timetable. In such cases, the City Council will follow the procedures set out below:
- a) A project profile will be drafted that includes how the DPD links to the Core Strategy or SPD links to saved or new policies, setting out key milestones for production, and the resources for preparation.
 - b) The project profile will be sent to the Government Office for the South East (GOSE) with a request to agree an amendment to the LDS. At the same time, background work on evidence gathering and community engagement will begin.
 - c) Once agreed, the project profile will be published on the City Council's website as an amendment to the LDS. The new LDD will be fully incorporated in to the LDS at the time of the Annual Review and Monitoring process.

7. Annual Monitoring Report

- 7.1 This first formal LDS will be submitted to GOSE by 28th March 2005. A revised LDS will be published annually thereafter and will be planned to coincide with the Annual Monitoring Report (AMR) required under the Act as set out below.
- 7.2 The Oxford LDS will be monitored on an annual basis from 1st April to 31st March, and be part of a wider Annual Monitoring Report. The AMR will be co-ordinated by the Planning Policy team in the Planning Business Unit. The first AMR will be published by December 2005, covering the period 1st April 2004 to 31st March 2005.
- 7.3 The AMR will be submitted to the City Council's Executive Board in the Autumn of each year in order to be able to submit it to the Government Office for the South East (GOSE) by the end of December of each year, as required by the legislation. The AMR will be publicly available, and published on the City Council's website.
- 7.4 The Executive Board will also consider the need for any changes to the Local Development Scheme (LDS) as a result of the monitoring process.

Baseline Data

- 7.5 The AMR will also meet the monitoring requirements to be set by the Sustainability Appraisal (SA) and Strategic Environmental Assessment (SEA) of each DPD. This will include the social, economic and environmental effects (including their impacts on the use of natural resources) of the policies, and compare them with the predicted impacts set in the SA/SEA.

Policy Monitoring

- 7.6 The AMR will also monitor:
- 'saved' policies to identify whether or not they are being implemented, and to identify actions to ensure implementation if appropriate;
 - whether the targets and indicators within the LDDs are being met, and identifying actions to overcome any areas where these are not being achieved;
 - what impact LDD policies are having on other national, regional, and local targets, for instance as set out in Oxford's Community Strategy;
 - action to be taken if policies need to be replaced – linking in with the LDS review and update above; and
 - specifically on housing, the AMR will include the number of dwellings built during the monitoring period, and since the relevant policies were adopted, and a trajectory of forecast future housing supply against strategic/regional housing requirements.

LDS Monitoring

7.7 In relation to the LDS the following factors will be assessed in each annual review:

- progress against specific 'milestones' for individual LDDs;
- reasons for any mismatch and proposed actions;
- any unforeseen circumstances that may have occurred;
- any new technical information that warrants changes or review;
- any other reviews, e.g. The Community Strategy that might take place; and
- update on saved and superseded policies.

7.8 In addition, it will provide:

- An up-to-date list of relevant background studies and documents; and
- Information as to the status of plans and policies prepared under the previous system of development plans.

8. Risk Analysis

- 8.1 There are a number of factors that may cause risk to the local development framework, through for example lack of internal and external resources causing slippage in timetables and delays in adoption. These risks are set out below along with some actions for alleviating the risk:

Challenging Timetables – High Risk

- 8.2 The Government has set challenging timetables to prepare the first tranche of Development Plan Documents. All LDDs will be carefully project managed to maximise the opportunities of meeting the timescales set out in this document. However uncertainties will remain throughout the process regarding, for instance, the number of representations likely to be received and consequently the amount of time needed to deal with them, the length of time of Examinations, and the availability of resources of external agencies.

Resources of External Agencies – High Risk

- 8.3 Preparation of the LDDs will require considerable input from other organisations, many of which will also be involved in other local authority LDDs. If these organisations do not have sufficient resources to meet the likely workload, this may result in delays to the timetable.
- 8.4 In order to minimise this risk, the City Council will seek to talk to such organisations as early as possible, and to share the LDS with such groups where they can be identified. One example is the Planning Inspectorate (PINS) who have seen a copy of this LDS.

Other Guidance – Medium/High Risk

- 8.5 Regional Planning Guidance for the South East (RPG9) is currently being reviewed but the timetable does not fit comfortably with the first documents being proposed in this LDS. LDDs will have to be prepared initially in accordance with existing approved strategic guidance and have regard to the emerging South East Plan (RSS) as appropriate.
- 8.6 Similarly, it is likely that there may be new national planning policy guidance, in the form of Planning Policy Statements (PPS) or Circulars for example, issued during the preparation of documents. These will have to be taken into account at the next appropriate stage in the preparation or review of the LDD.

Legislative/Government delays – Medium/High Risk

- 8.7 Throughout the process the input of GOSE and the Planning Inspectorate (PINS) is required. The availability of resources within these agencies will affect our ability to meet the timetables set out in this

document, particularly as many local authorities are likely to have similar timescales for preparing their first LDDs.

- 8.8 The City Council will ensure that it has early and ongoing dialogue with GOSE and the Planning Inspectorate (PINS) to limit this risk.
- 8.9 The City Council works closely with the Portfolio Members and has established an LDF Members Steering Group including the shadow portfolio holders of the opposition parties on the preparation of the LDF.

Timings of Committee Meetings – Medium Risk

- 8.10 At various stages through the production process of a DPD it will be necessary to take the draft document through the committee process of the City Council. On occasions it will be necessary to report to Scrutiny Committee, Executive Board and full Council. This requirement will inevitably add time to the process and this has been taken into account in the timeframes outlined in Appendix 2. However the timetable of committee meetings has not been prepared for the whole period to 2008 and so the timing of these meetings have been estimated. This leaves an element of uncertainty in the timeframes. Where appropriate special committee meetings will be called in order to facilitate the production of DPDs.

Changes in priorities caused by the RSS – Medium Risk

- 8.11 As work will begin on the LDF documents before the South East Plan (RSS) has been approved, it is possible that new issues and priorities will arise through the preparation of the South East Plan that will impact upon the programme set out in the LDS. For example the RSS may indicate that the production of a joint DPD with South Oxfordshire District Council for the site South of Grenoble Road may become necessary and a priority. A delay in the production of the South East Plan may result in a need to delay the production of the Core Strategy. Continuous monitoring of the LDS and keeping up to date with the progress of the South East Plan will ensure that any changes in priorities or delays are spotted as early as possible and that amendments can be made to the programme in response.

Staffing and resources – Medium/Low Risk

- 8.12 In addition to the staff in the Planning Policy team who will form the core of the LDF team, other officers in the Planning Business Unit will also be heavily involved in preparation of the LDDs identified in this Scheme. One officer will lead on each DPD with an identified support officer. It is anticipated that the risk of staff turnover within the team will be low, but that this process will ensure that the loss of one member of staff will limit any loss of knowledge of the process and project status. This structure will also ensure that there are adequate staff resources available to progress each LDD.

- 8.13 Nationally, there are difficulties with recruiting experienced planning staff and this may become an issue should additional/replacement staff be required.

Soundness/Legal Challenge – Low Risk

- 8.14 The City Council will ensure that all DPDs are “sound” and founded on a robust evidence base and well-audited stakeholder and community engagement systems in order to minimise the risk of legal challenge. The City Council will work closely with GOSE and PINS at all stages to ensure that the test of “soundness” is met.

Glossary

The enactment of the Planning & Compulsory Purchase Act 2004 has resulted in a number of new terms and acronyms which has led to the understanding of the subject to be quite difficult, even for the planning professional. This glossary is intended to be a simple explanation of the terms and the abbreviations used within the rest of this document.

- AMR** **Annual Monitoring Report:** This document will assess the implementation of the local development scheme and the extent to which policies in local development documents are being achieved. This report will be prepared annually and will form part of the LDF.
- CS** **Community Strategy:** A strategy produced by public, private and community stakeholders and led by the Local Strategic Partnership.
- DPD** **Development Plan Document:** Statutory documents which form part of the LDF. These documents will replace the policies in the adopted Structure and Local Plans. DPDs are a type of LDD (see below) however, not all LDDs are statutory documents.
- DSP** **Deposit Structure Plan:** The emerging Oxfordshire Structure Plan 2016.
- GOSE** **Government Office for the South East:** Represents Central Government in the South East including the Office of the Deputy Prime Minister.
- LDD** **Local Development Documents:** The documents which (taken as a whole) set out the City Council's policies relating to the development and use of land in Oxford.
- LDF** **Local Development Framework:** A non-statutory term used to describe the Local Development Documents that collectively guide development at the local level.
- LDS** **Local Development Scheme:** A project plan for the Local Development Documents.
- LDO** **Local Development Order:** An order prepared in compliance with amendments to be made to the Town and Country Planning (General Development Procedure) (England) Order 1995.
- LSP** **Local Strategic Partnership:** A group of significant stakeholders, including public, private and voluntary sectors, who produce the Community Strategy.
- OLP97** **Oxford Local Plan 1991-2001,** adopted September 1997
- OLP** **Oxford Local Plan 2001 – 2016**

P&CPAct Planning & Compulsory Purchase Act 2004

PEM Pre-examination Meeting: To be held by the Inspector no later than two months in advance of the opening day of an examination to discuss the management of the examination.

PGS Planning Gain Supplement: A recommendation of the Barker review of Housing Supply that would allow landowner development gains to contribute to wider benefits for the community. The Government are expected to make a decision on this recommendation by the end of 2005.

PINS The Planning Inspectorate

PPG Planning Policy Guidance notes: National planning policy produced by the Government under the previous planning system.

PPS Planning Policy Statement: National planning policy produced by the Government under the new planning regime. All planning policies at a regional, county and district level, and the determination of all planning applications, must comply with Planning Policy Statements.

RPB Regional Planning Body: The body that will produce the Regional Spatial Strategy.

RSS Regional Spatial Strategy: The type of planning policy produced at the regional level that forms part of the statutory development plan.

SA Sustainability Appraisal: The Planning and Compulsory Planning Act 2004 requires Local Development Documents to be subject to a Sustainability Appraisal, which examines the impact of the policies and proposals on economic, social and environmental factors (including on natural resources).

SCI Statement of Community Involvement: This document sets out the local planning authority's policy for involving communities in the preparation and revision of local development documents and considering planning applications. This document forms part of the LDF.

SEA Strategic Environmental Assessment: Under European Union legislation, any plan, which has a major impact on the environment, needs to be subject to a Strategic Environmental Assessment. This is an ongoing process intended to make the environment central to the decision making process, and to ensure that the process is transparent. This process is intended to be combined with the Sustainability Appraisal (SA).

- SEEDA** **South East England Economic Development Agency**
- SEERA** **South East England Regional Assembly:** The regional planning body (RPB) for South East England
- SEP** **South East Plan:** The Regional Spatial Strategy (RSS) for South East England
- SP** **Structure Plan:** Oxfordshire Structure Plan 2011, adopted 1998
- SPD** **Supplementary Planning Documents:** A type of Local Development Document that supplements and elaborates on policies and proposals in Development Plan Documents (DPD). Note SPD does not form part of the statutory Development Plan.
- SPG** **Supplementary Planning Guidance:** Guidance documents to support specific policies in the Local Plan although it does not form part of the Development Plan itself.

Appendix 1:

Schedule of Local Development Documents

OXFORD CITY COUNCIL
LOCAL DEVELOPMENT SCHEME

Document & LDD Status	Brief Description	Chain of Conformity	Milestones				
			Pre-production	Consultation on draft	Submission to SoS	Examination Period	Adoption
LDD100 Oxford Local Plan 2001 – 2016 Saved Plan	A statement of vision, policies and proposals for future development and land-use that: 1. enables the delivery of sustainable development objectives; 2. promotes positive measures to improve the local environment and meet the needs of local communities; 3. reflects the most current planning policy; 4. enables delivery of the housing allocation for the set period; 5. guides effective determination of planning applications.	<ul style="list-style-type: none"> ▪ Consistent with national planning policy and PPGs ▪ In general conformity with RPG9 ▪ In general conformity with both the Oxfordshire Structure Plan 2011 and the emerging Oxfordshire Structure Plan 2016 ▪ Influenced by the emerging PPS's and South East Plan (RSS). 	N/A	N/A	N/A	N/A	Nov. 2005
LDD101 Statement of Community Involvement (SCI) LDD	The SCI sets out the policy for involving communities in LDD preparation and revision and in the planning application processes. This will be a document that: 1. establishes the process whereby stakeholders are effectively engaged in the land use planning process; 2. reflects the Government's expectations regarding community engagement.	<ul style="list-style-type: none"> ▪ Consistent with the Town and County Planning (Local Development) (England) Regulations 2004. ▪ Influenced by the Community Strategy and other local consultation and communication strategies. 	April 2005	September 2005 (6 weeks)	February 2006	June 2006 (PEM to be held 2 months before, if required)	Sept. 2006

OXFORD CITY COUNCIL
LOCAL DEVELOPMENT SCHEME

Document & LDD Status	Brief Description	Chain of Conformity	Milestones				
			Pre-production	Consultation on preferred options & SA	Submission to SoS	Examination Period	Adoption
LDD102 Core Strategy DPD	A statement of vision, core policies and a spatial strategy that: 1. enables the delivery of sustainable development objectives; 2. reflects the most current planning policy; 3. enables delivery of the housing allocation for the set period; 4. guides the appropriate determination of planning applications; 5. sets out in a key diagram the broad strategy for the area.	<ul style="list-style-type: none"> ▪ Consistent with national planning policy and PPS's ▪ In general conformity with RPG9 and the emerging South East Plan (RSS). ▪ Influenced by the 'saved' Local and Structure Plan and the Community Strategy. ▪ All LDDs to be in conformity with Core Strategy. 	January 2006	October 2006 (6 weeks)	October 2007	March 2008 (PEM to be held 2 months before)	January 2009
LDD103 Proposals Map DPD	A document that: 1. expresses geographically the adopted development plan policies; 2. will be revised as each DPD is adopted.	<ul style="list-style-type: none"> ▪ In conformity with the Core Strategy and all other DPDs. ▪ The Proposals Map is a direct derivative of other DPDs and will be amended with each DPD as appropriate when they are adopted. 	N/A	Will be updated with each DPD	Will be updated with each DPD	Will be updated with each DPD	Will be updated with each DPD
LDD104 Annual Monitoring Report (AMR) LDD	An annual report to: 1. establish baseline data for both policy monitoring and SA/SEA purposes; 2. establish the range of indicators that will be needed to monitor policies. 3. assess the extent to which policies in local development documents are being achieved; 4. assess the implementation of the Local Development Scheme; 5. note if any adjustments to the local development scheme are considered necessary since it was published.	<ul style="list-style-type: none"> ▪ In conformity with Regulation 48 of the Town and Country Planning (Local Development) (England) Regulations, 2004. ▪ Consistent with PPS12: Local Development Frameworks. 	N/A	N/A	December annually (starting December 2005)	N/A	N/A

OXFORD CITY COUNCIL
LOCAL DEVELOPMENT SCHEME

Document & LDD Status	Brief Description	Chain of Conformity	Milestones				
			Pre-production	Consultation on preferred options & SA	Submission to SoS	Examination Period	Adoption
LDD105 Site Allocations DPD	A document that: 1. sets the framework for realising, managing and implementing housing sites; 2. addresses the need to create sustainable communities with supporting infrastructure; 3. sets the framework to identify sites to meet the housing allocation; 4. promotes the appropriate mix and type of dwellings; 5. sets out Oxford's housing allocation (10 years supply – 5 years shown on the Proposals Map); 6. updates the Proposals Map.	<ul style="list-style-type: none"> ▪ Conformity with the Core Strategy (LDD101) and all other DPDs. ▪ Consistent with national planning policy; in particular PPG3 (and any review). ▪ In general conformity with RPG9 and the emerging South East Plan (RSS). ▪ Influenced by the 'saved' Structure Plan, the Community Strategy, and the City Council's Housing Strategy. 	Sept. 2007	June 2008 (6 weeks)	April 2009	October 2009 (PEM to be held 2 months before)	Sept. 2010
LDD106 Oxford's West End Area Action Plan DPD	A document that: 1. identifies site specific proposals to stimulate regeneration of the western quarter of the City centre and deliver the policy framework set out in other DPDs, including those identified to meet Oxford's housing allocation; 2. identifies timing and delivery mechanisms for site specific proposals; 3. updates the Proposals Map.	<ul style="list-style-type: none"> ▪ Conformity with the Core Strategy (LDD101) and all other DPDs. ▪ Consistent with national planning policy and PPS's ▪ In general conformity with RPG9 and the emerging South East Plan (RSS). ▪ Conformity with 'saved' policies in the Local Plan. ▪ Reflects Oxford West End Area Development Framework. 	Sept. 2005	June 2006 (6 weeks)	April 2007	October 2007 (PEM to be held 2 months before)	Sept. 2008

OXFORD CITY COUNCIL
LOCAL DEVELOPMENT SCHEME

Document & LDD Status	Brief Description	Chain of Conformity	Milestones				
			Pre-production	Consultation on preferred options & SA	Submission to SoS	Examination Period	Adoption
LDD107 Transport & Accessibility DPD	A document that: 1. provides the land use implementation of the Local Transport Plan; 2. provides policies for demand management and parking; 3. provides policies to promote other modes of transport as an alternative to the car, and to improve the transport network in support of the Core Strategy. 4. updates the Proposals Map.	<ul style="list-style-type: none"> ▪ Conformity with Core Strategy (LDD101) and all other DPDs. ▪ Consistent with national planning policy; in particular PPG3, PPG6, PPG13. ▪ In general conformity with RPG9 and the RPG9 update on Transport. ▪ In general conformity with the emerging South East Plan (RSS). ▪ Influenced by the 'saved' Structure Plan, Local Transport Plan, and the Community Strategy. 	Sept. 2006	June 2007 (6 weeks)	April 2008	October 2008 (PEM to be held 2 months before)	Sept. 2009

OXFORD CITY COUNCIL
LOCAL DEVELOPMENT SCHEME

Supplementary Planning Documents							
Document & LDD Status	Brief Description	Chain of Conformity	Milestones				
			Pre-production	Consultation on draft SPD & SA report	Submission to SoS	Examination Period	Adoption
LDD201 Affordable & Key Worker Housing SPD	A document to: 1. support saved Policies HS.5,6,8,10,11 and 11A of the OLP. 2. provide supplementary advice on the delivery of affordable and key worker housing through Section 106 Planning Obligations from both residential and commercial developments.	<ul style="list-style-type: none"> ▪ Conformity with 'saved' policies in the OLP. ▪ Conformity with Core Strategy (LDD101) and all other DPDs. ▪ Consistent with national planning policy; in particular PPG3 (and any review). ▪ In general conformity with RPG9 and the emerging South East Plan (RSS). ▪ Influenced by the 'saved' Structure Plan, the Community Strategy the City Council's Housing Strategy. 	July 2005	February 2006	N/A	N/A	July 2006
LDD202 Planning Obligations /Planning Gain Supplement SPD	A document to: 1. support 'saved' OLP policies and any subsequent policies in the LDF; 2. deliver sustainable development in support of the Core Strategy.	<ul style="list-style-type: none"> ▪ Conformity with 'saved' policies in the OLP. ▪ Conformity with Core Strategy (LDD101) and all other DPDs. ▪ Consistent with national planning policy; in particular Circular 1/97 (and any review). ▪ In general conformity with RPG9 and the emerging South East Plan (RSS). ▪ Influenced by the 'saved' SP and Community Strategy. 	January 2006	September 2006	N/A	N/A	January 2007

OXFORD CITY COUNCIL
LOCAL DEVELOPMENT SCHEME

Document & LDD Status	Brief Description	Chain of Conformity	Milestones				
			Pre-production	Consultation on draft SPD and SA report	Submission to SoS	Examination Period	Adoption
LDD203 Parking Standards; Transport Assessments & Travel Plans SPD	A document to: 1. support 'saved' OLP policies TR.1, 2, 3, 4 and TR.10, 11, 12; and the subsequent Transport and Accessibility DPD (LDD103); 2. set out car and cycle parking requirements on residential and non-residential developments with objectives that: <ul style="list-style-type: none"> ▪ Determine maximum levels of parking in new developments. ▪ Encourage alternative modes of transport. ▪ Provide minimum standards of cycle parking provision. 3. set out guidance on the implementation of Transport Assessments and Travel Plans; 4. promote community safety and good urban design e.g. through 'Home Zones'.	<ul style="list-style-type: none"> ▪ Conformity with Core Strategy (LDD101) and all other DPDs. ▪ Consistent with national planning policy; in particular PPG3, PPG6, PPG13. ▪ In general conformity with RPG9 and the emerging South East Plan (RSS). ▪ Conformity with 'saved' policies in the OLP. ▪ Influenced by the 'saved' Structure Plan, Local Transport Plan and the Community Strategy. 	January 2006	September 2006	N/A	N/A	January 2007